

Energy and Comfort Management in Energy Efficient Buildings Using RETSCREEN Software-A Case Study Analysis

Vijaya Lalita. P*, Dr. Ch. Saibabu**, G. R. K. D. Satya Prasad***

*(PG Student, JNTUK, Kakinada, Andhra Pradesh)

** (Professor in EEE, Director of Academic Planning JNTUK; Kakinada, Andhra Pradesh, INDIA)

*** (Research Scholar, JNTU Kakinada, Assoc. Professor, GIET, Gunupur, ODISHA)

ABSTRACT

Smart and energy-efficient buildings have recently become a trend for future building industry. The major challenge in the control system design for such a building is to minimize the power consumption without compromising the customers comfort. Buildings have the physical potential to harness diluted and sometimes unpredictable renewable energy. The building envelope and the ground constitute the basic resources for energy autonomous buildings. It is widely accepted that if any country has to reduce greenhouse gas emissions it must aggressively address energy end use in the building sector.

Simulation of building performance is increasingly being used in design practice to predict comfort of occupants in finished buildings. In this thesis, the simulation results shows that the proposed intelligent control system successfully manages the user's preferences for thermal and illuminance comfort, indoor air quality and the energy conservation by using RETSCREEN software. The present work attempts to overcome certain inadequacies of contemporary simulation applications with respect to environmental control systems, by developing novel building control systems modeling schemes. These schemes are then integrated within a state-of-art simulation environment so that they can be employed in practice.

Keywords – Building materials, Energy Efficient buildings, Energy performance index, HVAC parameters, RETSCREEN software.

I. INTRODUCTION

Energy consumption of buildings (both residential and commercial) has steadily increased, reaching figures between 20% and 40% in developed countries. The rise of energy demand in buildings will continue in the near future because of growth in population, long-term use of buildings, and increasing demand for improved building comfort levels. Therefore, the energy efficiency of buildings is of prime concern for anyone wishing to identify energy savings. To this end, automated meter reading and smart metering systems have been employed to collect building energy data [1]. The aim of these data is to provide greater insight into how a building consumes energy and, therefore, what improvements are likely to be most effective in reducing consumption. Energy Efficient Building (EEB) design has become a high priority for present situations where power crisis is escalating to higher levels. The present study of EEB is a challenging task for multi-disciplinary technology, because designing a EEB involves the knowledge of civil, mechanical, electrical, environmental and architectural engineers. The scientific evidences for climate changes and the associated impacts of greenhouse gas emissions are becoming increasingly obvious. Most of the countries, buildings are responsible for 47% of national energy consumption. Scientists and built environment professionals are trying to find advanced technologies, renewable

energies, and useful strategies to reduce carbon dioxide emissions [2].

The concept of EEB has gained wide international attention during last few years and is now seen as the future target for the design of buildings. However, before being fully implemented in the national building codes and international standards, the EEB concept requires clear and consistent definition and a commonly agreed energy calculation methodology.

This paper focuses on the review of the most of the existing EEB definitions and the various approaches towards possible EEB calculation methodologies. It presents and discusses possible answers to the above mentioned issues in order to facilitate the development of a consistent EEB definition and robust energy calculation methodologies are provided [3].

II. AN APPROACH TO PLAN EEB

Buildings are usually evaluated according to the amount of energy required by the building and therefore expressed in terms of kWh/m²/year and termed as Energy Performance Index (EPI). The assessment of the energy demand for the climatic control of a building can only be dealt with if the level of the indoor environmental comfort and it is directly related to EPI. If the value of EPI is less, then the consumption of energy is less and hence the electricity

bills will be less. But, all these can be achieved without compromising the comforts and luxuries of the consumer.

A systematic approach is required to plan an EEB without sacrificing the requirements of the consumer. A good EEB design requires the technologies of civil, thermal, mechanical, electrical and architectural tools. Hence the below flow chart shown in “Fig.1” will gives an approach to plan an EEB.

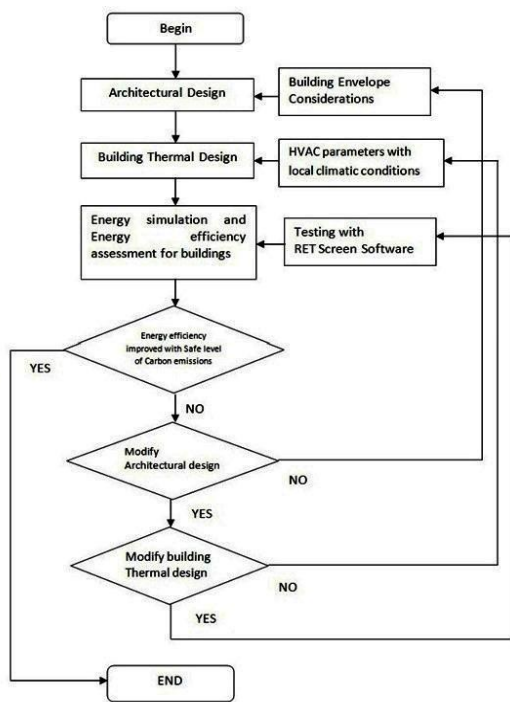


Fig. 1: Planning of an EEB through flow chart

A base building will be measured with initial EPI and if it measures 350 kwh/m²/year. By envelope optimization and with building materials in roof and walls the EPI can decrease to 225 kWh /m²/year. Similarly with lighting optimization to 175 kwh/m²/year and with HVAC optimization 125 kwh/m²/year and finally with Controls, sensors, rain and waste water harvesting it will reach to 95 kwh/m²/year. All these results will be simulated by using RETSCREEN software by considering a case study.

III. MATHEMATICAL MODELING OF EEB

A Simplified Building Energy model will be analyzed by considering a room with thermal parameters. The net heat energy loss (or gain) of a building can be defined at any moment from the thermal balance of the building (first law). For example for the calculation of the thermal load the instantaneous steady-state thermal balance of a building is given by

$$q_H = (q_{cond} + q_{inf}) - (q_{sol} + q_{int}) \quad (1)$$

Where, q_H is the thermal load of the building in watts. The first two terms on the right express the thermal losses ($Q_{loss} = q_{cond} + q_{inf}$), which is the more important part of any building study, while the last two terms are the thermal gains of the building q_{cond} are the thermal losses through the building's envelope, q_{inf} are the infiltration loss caused by the entrance of fresh air. Respectively, q_{sol} are the net solar thermal gains and q_{int} are the internal thermal gains (people, lighting, equipment operation etc.).

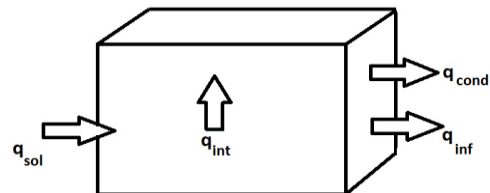


Fig.2: Building model

For a building, a state of balance practically means $Q_{loss} = Q_{gain}$ and therefore the thermal load $q_H = 0$ shown in “Fig.3”. All building losses are depended for the temperature difference ($\Delta T = T_i - T_o$) of the internal (T_i) and the external (T_o) of the building. Thus, when, $Q_{loss} > Q_{gain}$ something that usually happens during the winter period where the temperature differences ΔT are high, then $q_H > 0$, and so q_H expresses the additional thermal load in watts that the building demands in order to return to its thermal equilibrium state and in the end specifies the building's heating demand in time.[5]

The thermal load of a building, after the introduction of a Building total Loss Coefficient (BLC) is given then by:

$$Q_H = Q_{Loss} - Q_{gain} = BLC \times (T_i - T_o) - Q_{gain} \quad (2)$$

Where Q_H is the thermal load in watt, T_i is the necessary internal temperature of the building (or even the design temperature of the building in °C) and T_o is the outside temperature.

The BLC is calculated in Watt/°C, modified to include both the thermal losses through the buildings envelope and the infiltration losses. For any building, BLC can be normally calculated as:

$$BLC = \sum_{n=1}^N U_{T,i} \times A_i + m_{inf} \times C_{pa} \quad (3)$$

Where $U_{T,i}$ is the thermal conductance in Watt/(m² K) of the building components (outside walls, floors, doors, windows etc.,) A_i is the respective components areas in m², m_{inf} is the mass flow rate of infiltration air in kg/sec (Lt/sec), C_{pa} is the specific heat capacity of air at constant pressure in KJ/(Kg⁰K). In the BLC, they are also considered the relative heat capacities of the building components within which it is stored an additional thermal load that might come either from the heat gains or the heat losses of the building[6].

IV. CASE STUDY ANALYSIS BY RETSCREEN

The RETSCREEN Software Building Envelope Model can be used worldwide to evaluate the energy use and savings, costs, emission reductions, financial viability and risk for building envelope energy efficiency measures. The software can model a wide variety of projects ranging from passive solar designs for houses, to energy efficient window use in commercial buildings, to complete energy efficient construction practices on the entire building envelope for large institutional and industrial buildings [7]. The software also includes product, project and climate databases, and a detailed user manual.

In this case the analysis is considered for JNTU College of Engineering Kakinada. For this analysis the procedure is as follows:

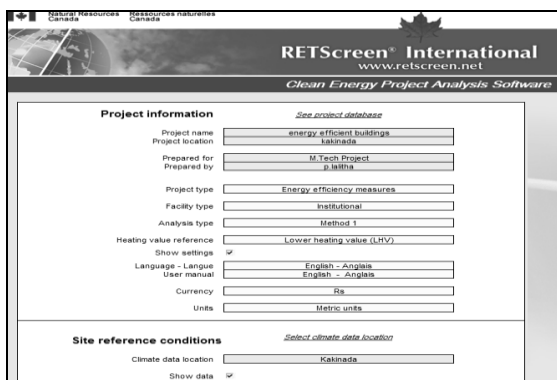


Fig. 3: Energy model sheet of RETSCREEN

The project type is of Energy efficient Measures, this is of institutional facility type and the analysis method is considered as method 1. The Heating value reference is considered as LHV. Higher heating value is typically used in cold locations like Canada and USA, while lower heating value is used in the rest of the world. Hence LHV is selected. This is of International wide software hence we can get the currency what we required. The climatic data conditions are obtained for this location which is included in Site reference conditions.

Month	Climate data location		Project location		Daily solar radiation - horizontal	Atmospheric pressure	Wind speed	Earth temperature	Heating degree days	Cooling degree days
	lat	lon	lat	lon						
January	15.8	83.2	15.8	83.2	1.96	101.8	1.8	27.4	0	492
February	16.1	74.5%	15.8	83.2	1.74	101.8	1.8	27.4	0	431
March	20.4	72.2%	15.8	83.2	0.43	100.4	1.2	29.8	0	570
April	29.5	71.7%	15.8	83.2	0.71	100.2	1.3	29.3	0	615
May	32.0	70.3%	15.8	83.2	0.18	99.8	1.4	30.8	0	482
June	32.0	70.4%	15.8	83.2	0.56	99.5	1.7	29.9	0	520
July	29.2	77.1%	15.8	83.2	0.20	99.7	1.7	28.8	0	595
August	26.7	79.7%	15.8	83.2	0.44	99.4	1.7	28.8	0	584
September	25.0	81.0%	15.8	83.2	0.44	100.0	1.2	25.6	0	584
October	20.5	79.1%	15.8	83.2	0.49	100.3	1.0	27.8	0	558
November	20.3	72.0%	15.8	83.2	0.46	100.6	1.0	26.6	0	459
December	24.5	71.7%	15.8	83.2	0.56	100.8	1.0	25.6	0	480
Annual	25.2	74.5%	15.8	83.2	1.10	100.2	1.5	28.1	0	6133
Measured at	m									

Fig.4: Climate data base

To access the RETSCREEN Climate Database click on the "Select climate data location" hyperlink or use the RETSCREEN menu or toolbar.

This is the extension of first window which

show the data of climatic conditions of the considered location. While the latitude and longitude values are entered, the values of Air temperature, Relative humidity, Daily radiation-horizontal, Atmospheric, wind speed, Earth temperature, Heating Degree days, Cooling degree days are obtained for monthly basis. The data obtained is only for reference purpose not to run the model.

Facility characteristics	Heating (\$)	Cooling (\$)	Electricity (\$)	Incremental initial costs (\$)	Fuel cost savings (\$)	Incremental O&M savings (\$)	Simple payback (yr)	Include measure? (Y/N)
Building envelope								
Window glazing								
Roof insulation								
Wall insulation								
Ventilation								
Air conditioning								
Lighting								
Mechanical equipment								
HVAC system								
Chiller								
Boiler								
Process heating								
Process cooling								
Water heating								
Water cooling								
Compressed air								
Refrigeration								
Other								
Total	0	64	0	801,000	113,462	0	8.3	

Fig 5: Building parameters

In this tool, enter the information about the facility characteristics, for the base case and the proposed case facilities. The user clicks on the blue hyperlinks (e.g. Heating system, Cooling system, Building envelope, ventilation, lighting etc.) to access the data entry forms used to describe the facility. In addition, the key results of the model are displayed in this section (e.g. fuel saved, simple payback, etc.).

In this analysis the electrical equipments like fans, tube lights and computer are taken. For these equipments the base case and proposed case are considered. By using efficient devices the power saving is of 36.2%. Although the initial cost may be high, at last there is a lot of saving. For building envelope the payback period is 8.3 years and for electrical equipments there is no payback period means when we invest the money immediately we can get the savings.

A. Emission Analysis:

Base case electricity system (Baseline)	Country - region	Fuel type	GHG emission factor (excl. TAD) losses		GHG emission factor
			ICCO/MWh	%	
India	All types		0.933	20.1%	1.166
GHG emission					
Base case	ICCO2		113.8		
Proposed case	ICCO2		80.8		
Gross annual GHG emission reduction	ICCO2		33.1		
GHG credits transaction fee	%		2.0%		
Net annual GHG emission reduction	ICCO2		32.4	is equivalent to	5.9 Cars & light trucks not used
GHG reduction income					
GHG reduction credit rate	R\$/ICCO2				

Fig.6: Emission analysis

Comparing to base case the proposed case will cut short the emissions to 28%. That is equivalent to 6 cars not used per year. In a larger scale it can earn the carbon credits to the project and it will support the additional revenue to the project.

B. Financial analysis:

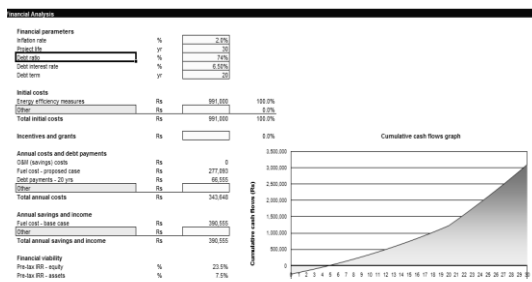


Fig.7: Financial analysis

In financial analysis, the fuel rate for base case with proposed cases are compared even though the initial investment is high the payback period is very less in some times it may be neglected also. Here the project life is considered for 30years.

V. CONCLUSIONS

The results obtained by using RETSCREEN software can be very realistic and gives very promising results for Energy Efficient Buildings. The main feature of this software is; it will integrates the local climatic conditions and hence planning of energy models are simpler.

The building simulation results, found that how various parameters in energy dependence can be decreased by step by step and finally gives the reduction in energy needs. However, as the consideration of equipments was done optimistically for the desired building load and net profits will be higher than the results in simulation by considering carbon credits and subsidies from government organizations.

VI. ACKNOWLEDGEMENTS

I thank the Department of EEE, JNTU Kakinada for giving the information regarding to building particulars.

References

[1] Xiaoli Li, Chris P. Bowers, and Thorsten Schnier, Classification of Energy Consumption in Buildings With Outlier Detection, IEEE transactions on industrial electronics, vol. 57, no. 11, November 2010

[2] Liping Wang, Julie Gwilliam, Phil Jones, Welsh school of Architecture, Cardiff University, on Case study of zero energy house design in UK, Elsevier, Energy and Buildings 41 (2009) 1215–1222

[3] A.J. Marszala, P. Heiselberg, J.S. Bourrelle, E. Musall, K.Voss, I. Sartori, A.Napolitano Zero Energy Building – A review of definitions and calculation methodologies, Elsevier, Energy and Buildings 43 (2011) 971–979

[4] Guglielmo S. Aglietti, Harnessing High-Altitude Solar Power, IEEE, transactions on energy conversion, vol. 24, no. 2, june 2009

[5] Mohan Kolhe Techno-Economic Optimum Sizing of a Stand-Alone Solar Photovoltaic System, IEEE TRANSACTIONS ON ENERGY CONVERSION, VOL. 24, NO. 2, JUNE 2009

[6] Electricity, Resources, and Building Systems Integration at the National Renewable Energy Laboratory, David Mooney National Renewable Energy Laboratory, Golden, Colorado 978-1-4244-4241-6/09/ 2009 IEEE

[7] Creating Low-Cost Energy-Management Systems for Homes Using Non-Intrusive Energy Monitoring Devices, Rebecca L. Sawyer, Jason M. Anderson, Edward Lane Foulks, John O. Troxler, and Robert W. Cox 978-1-4244-2893-9/09/ 2009 IEEE

[8] G.R.K.D.Satya Prasad, Dr. K. Vijaya Kumar Reddy, Dr. CH. Saibabu M.Tech., Ph.D, Integration of renewable energy sources in Zero energy buildings with economical and environmental aspects by using HOMER. G.R.K.D.Satya Prasad* et al. / (IJAEST) Vol No. 9, Issue No. 2, 212 – 217

[9] New Technologies for Rural Lighting in Developing Countries: White leds Adoniya Ben Sebitosi, Member, IEEE, and Pragasen Pillay, Fellow, IEEE transactions on energy conversion, VOL. 23, NO. 1, MARCH 2008

[10] Phatiphat Thounthong, St´ephane Ra´and Bernard Davat, Control Algorithm of Fuel Cell and Batteries for Distributed Generation System, Member, IEEE transactions on energy conversion, vol. 23, no. 2, june 2008

[11] Piyasak Poonpun, Student Member, IEEE, and Ward T. Jewell, Fellow Analysis of the Cost per Kilowatt Hour to Store Electricity, IEEE transactions on energy conversion, vol. 23, no. 2, june 2008

[12] Chin-Sien Moo, Member, IEEE Parallel Operation of Battery Power Modules, Kong Soon Ng, Student Member, IEEE transactions on energy conversion, vol. 23, no. 2, june 2008

[13] Caisheng Wang, Senior Member, IEEE, Power Management of a Stand-Alone Wind/Photovoltaic/Fuel Cell Energy System transactions on energy conversion, vol. 23, no. 3, september 2008.